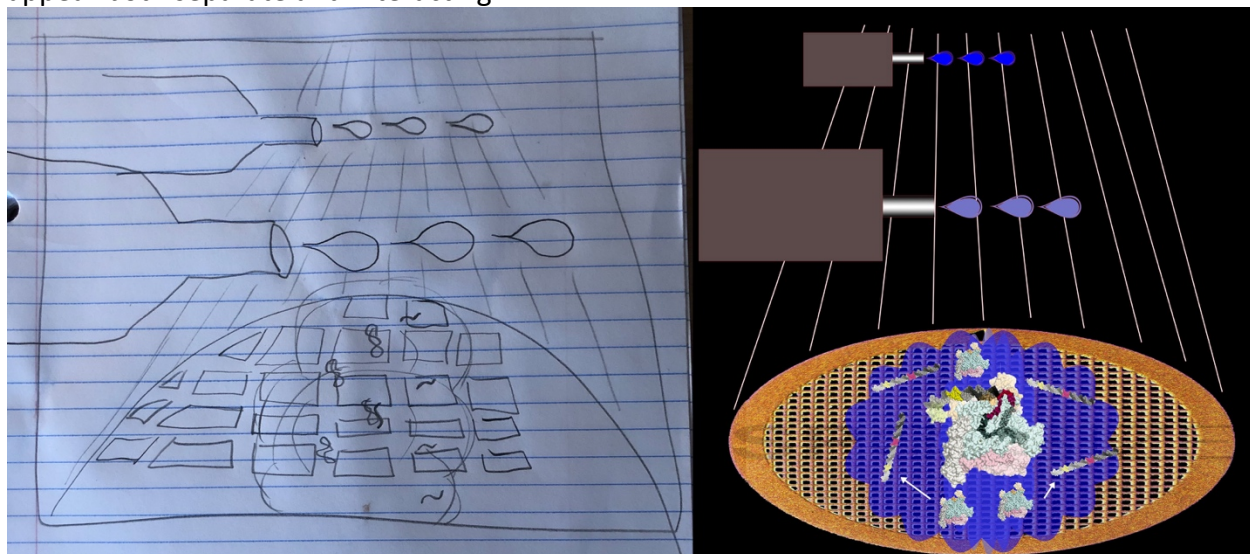
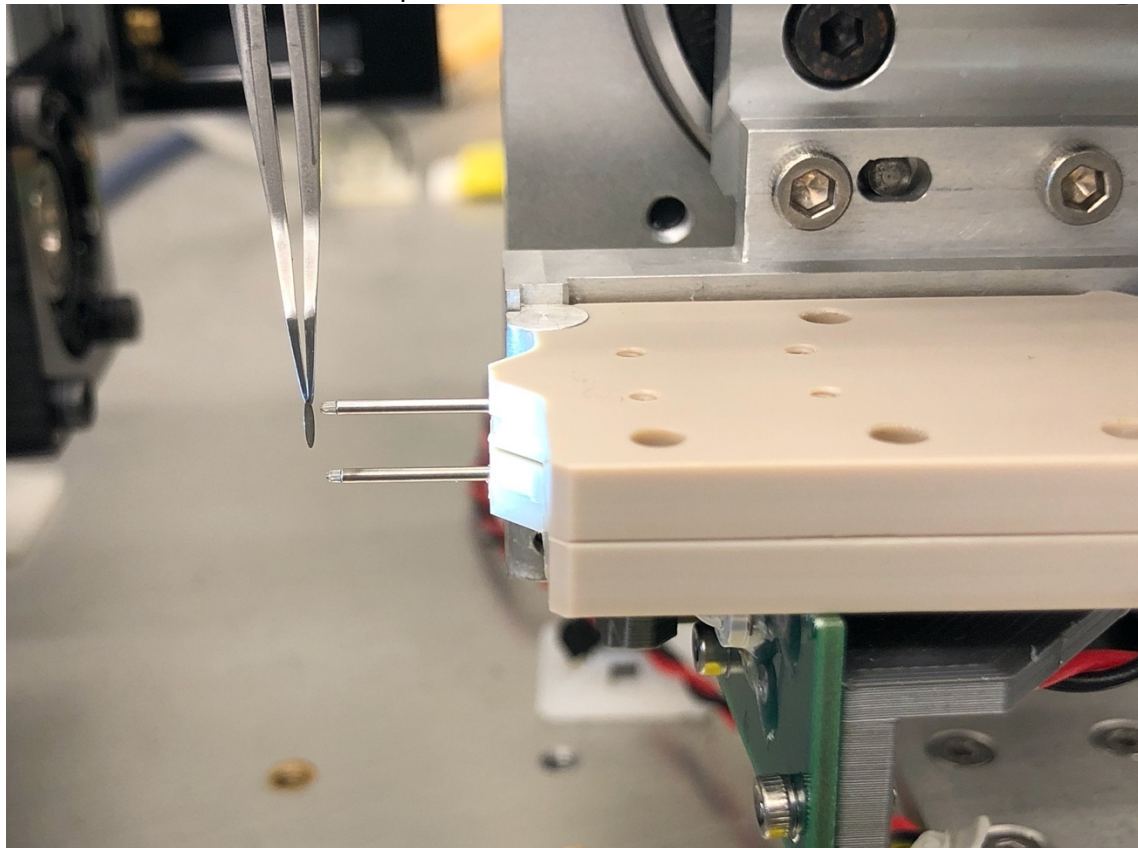


Our mockup/draft. Grid appears in fast motion, coming toward the viewer out of the page. Liquid just sprayed by dispenses in the distance is seen on the grid. Molecules in the liquid appear both separate and interacting.

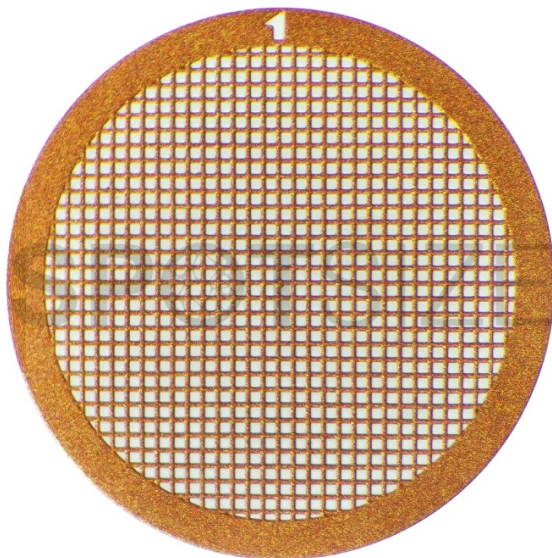




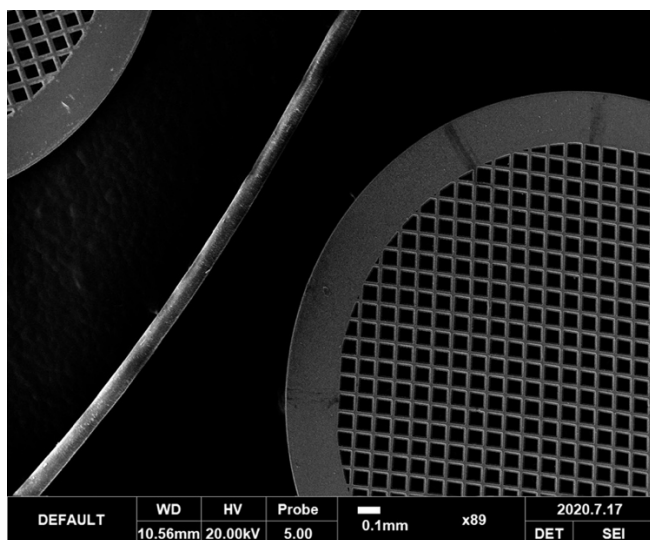
Grid in tweezers in front of dispensers



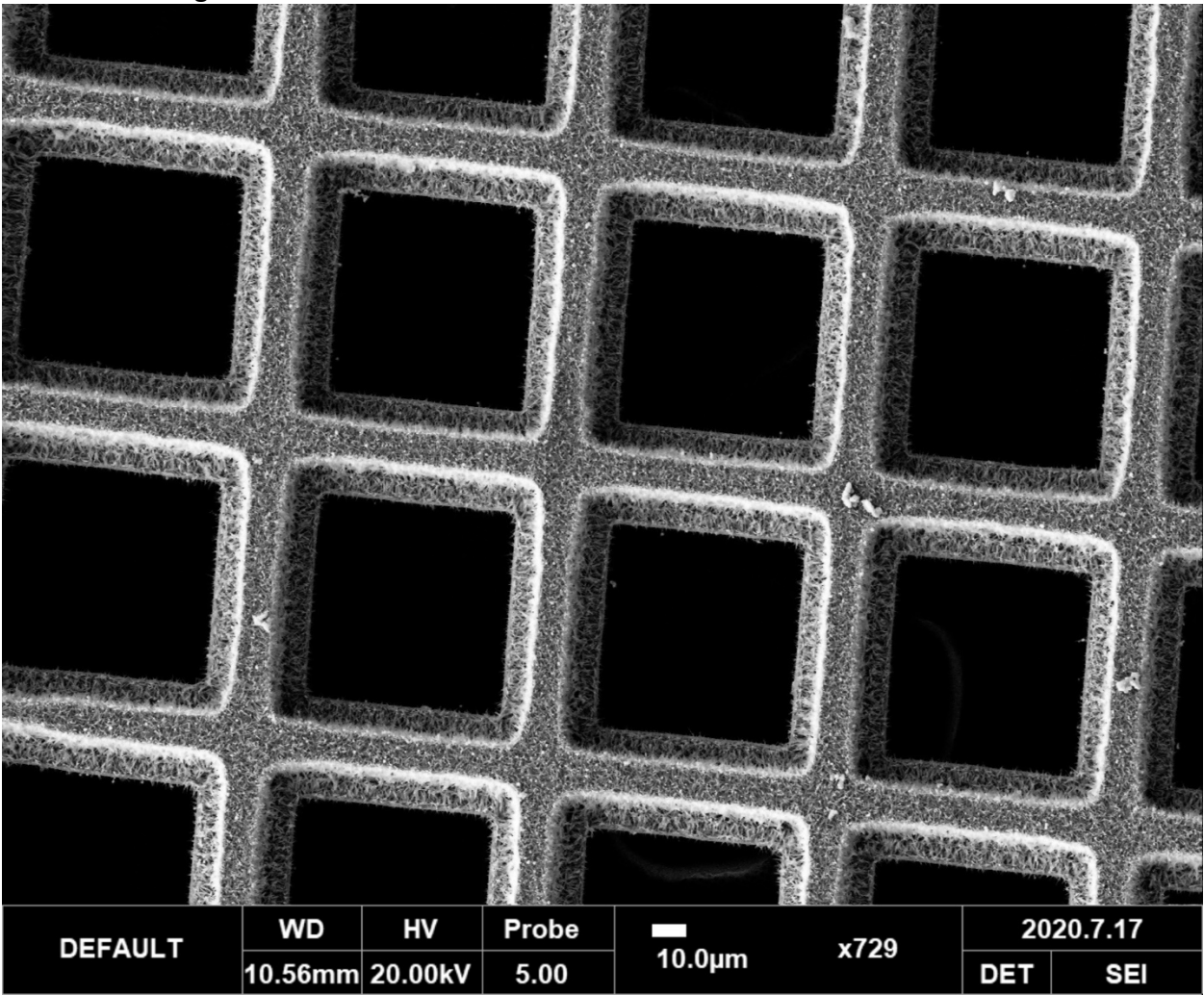
A sample grid



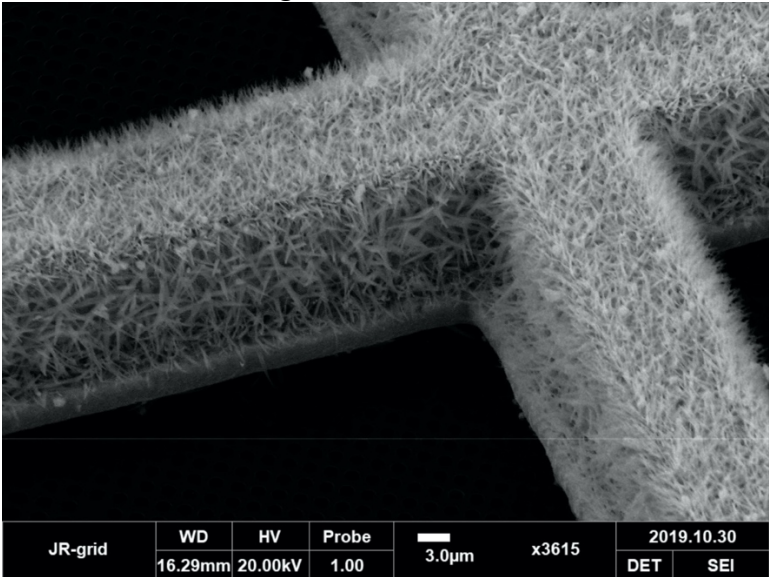
human hair for scale



A zoom in on a grid covered in nanowires

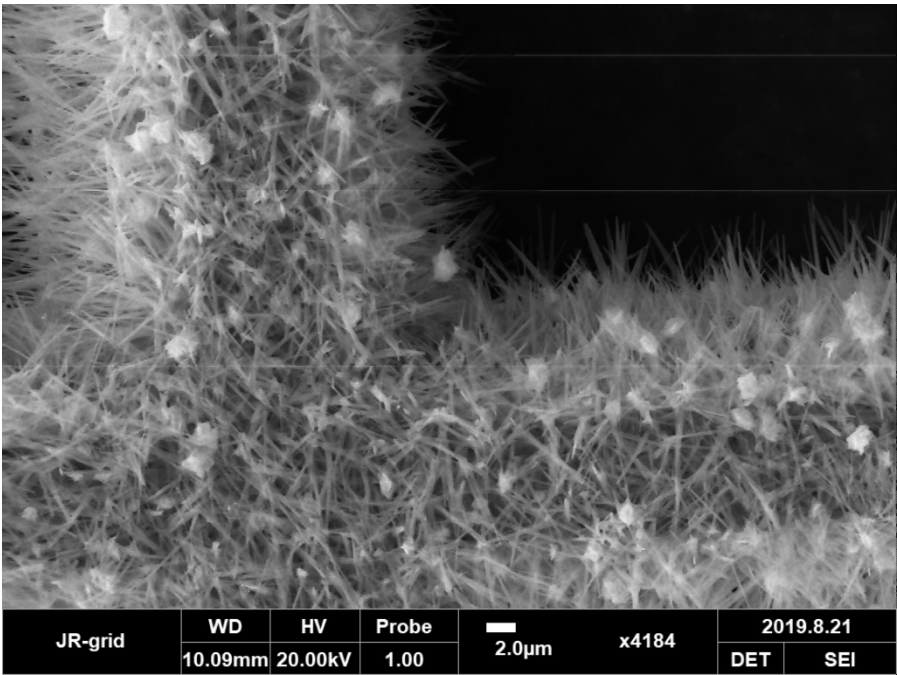


A further zoom in on grid mesh with nanowires:





A zoom in on the nanowire “lawn”.



And a further zoom in

